



statement phono

Loving music

User manual



Pic. similar

Dear **Clearaudio**-customer,

Thank you for choosing the *statement phono* preamplifier, a high quality product made in Germany by **Clearaudio**.

To avoid misuse and achieve the best possible results with your *statement phono* preamplifier, please read the instruction and user manual carefully.

The design of the **Clearaudio** *statement phono* preamplifier revolutionizes the reproduction of vinyl records to a standard barely imaginable.

The fully symmetrical circuit topology of the *statement phono* preamplifier together with the ability to use either RIAA, or almost any other phono equalization curve makes the *statement phono* preamplifier one of the most flexible and sophisticated phono preamplifiers in the entire audio world. Hand selected and matched electronic parts such as extremely low noise resistors and non-magnetic silver-glimmer capacitors contribute towards the phenomenal performance.

- Fully symmetrical analogue circuit
- Extremely low noise resistors and non-magnetic silver-glimmer capacitors
- Remote control input load adjustment
- RIAA and fully adjustable equalization curves
- 2 phono inputs
- 3 additional analogue inputs
- Fully symmetrical accu power supply in separate, massive housing.
- Double shielded case construction

We wish you a lot of pleasure with your new **Clearaudio** *statement phono* preamplifier!

Clearaudio electronic GmbH

This section must be read before any connection is made to the mains supply.



Loving music

User manual



Important Safety Instructions



1. General Instructions

- Read these instructions and keep them safe. Follow all instructions.
- Not suitable for children under 6 years! The package may contain small parts that can be swallowed. Risk of suffocation from plastic film and small parts. Keep plastic films, bags, straps, etc. away from children as there is a risk of suffocation. Children can strangle themselves with cables. Keep cables out of the reach of children.
- Check the device for any damage before use. If the device is damaged, do not connect it to the power supply! Repair or maintenance is required if there is any damage. For example, if the power cord or plug is damaged, liquid or objects have entered the device, the device has been exposed to rain or moisture, does not function properly, or has been dropped. Contact your dealer to have the device checked.
- If batteries (including battery packs or replaceable dry batteries) are used, do not expose them to direct sunlight, fire, or high heat.
- **Restart:** If the device does not respond to operation, the normal operating state can be restored by turning the device off and on again using the device's power switch.

2. Intended Use

The intended use of the device is to use it in accordance with the information provided in the user manual.

The power supply should only be operated with the maximum permissible connection values, according to the technical data. Any other use or modification of the power supply is not intended.

3. Installation Location

- Avoid locations with direct sunlight, temperature fluctuations, and high humidity. Also, do not place electrical devices near heaters, heat lamps, or other devices that produce heat. The device is designed for operation in heated rooms. The device should only be placed on level surfaces.
- Never block the ventilation slots or cover the device with a cloth or similar. No objects should be placed on the device.
- Installation in closed shelving systems or similar furniture is not permitted.
- Choose a location near the wall socket so that the power plug is always accessible.
- Electrical devices should never be operated near water.
- **Phono preamplifier:** Phono preamplifiers are devices with high signal amplification, as the voltage delivered by the turntable's cartridge is very low (in the range of a few mV). For this reason, high-frequency interference signals are also noticeably amplified. A complete blocking of these interference signals in the device would degrade the audio properties. As a result, high-frequency interference, for example from the 230 V or 115 V power grid, could affect sound quality. Therefore, the device should not be operated near high-frequency generating devices such as mobile phones or modems, or on power grids used for data traffic (PLC).

4. Connection

- Never bypass the safety features of a polarized or grounded plug. Polarized plugs have two power contacts, one of which is wider than the other. Grounded plugs (protective contact plugs) have two power contacts and a third grounding contact. Both plug types serve safety purposes. If the existing plug does not fit into the socket being used, have the plug replaced by an electrician.
- Use the device only with the intended connection cable.
- Ensure that the power cord cannot be stepped on or pinched, especially near plugs, sockets, and the power cord outlet/connection. Regular visual inspection of any potentially damaged insulation of the connection cable is also recommended for your own safety. Have a damaged cable replaced immediately by a professional!
- A small standby current is drawn from the power grid even when the power or standby/on switch is not in the on position.
- Never pull the power cord to unplug the device, always pull directly on the plug!
- **Power terminal:** Do not plug sockets into each other.

5. Maintenance

- If you do not operate the device for a long time, we recommend disconnecting the power supply from the power grid.
- Use only a soft cloth with a smooth surface or a soft brush for cleaning. Do not use aggressive cleaning agents.
- Electrical devices contain magnetic storage devices. If external magnets come near these devices, they interfere with the magnetic components of the devices and can damage them.

6. Health Warnings

- Permanently high volume can cause various hearing damages. Handle high volumes responsibly!
- Heat development: Be careful when touching the device - the housing can become warm during operation.
- There is a risk of injury during setup due to heavy components, such as pinching fingers.
- Risk of injury from sharp objects.

7. Disclaimer of Liability

Use only accessories approved by the manufacturer. Warranty claims will be void if damage is caused by failure to follow the instructions in the manual. The manufacturer assumes no liability for consequential damages.

Liability Disclaimer: Clearaudio assumes no liability for damage to sound carriers caused by improper handling!

8. Service

- Do not open the housing to expose the internal electronics; there are no components inside the device that require user maintenance. This can also lead to loss of warranty. Leave all repairs/maintenance to qualified personnel.
- The device may only be repaired by the manufacturer during the warranty period, otherwise the warranty claim expires. Service for all Clearaudio products should be carried out exclusively by the specialist dealer. If service is required despite the high manufacturing standard, the Clearaudio product must be sent to Clearaudio via your dealer.
- If malfunctions occur, contact the dealer from whom you purchased the device. Do not use the product again until the repair has been carried out.

9. Transport

Always use the original packaging when transporting Clearaudio products. Make sure to pack the device exactly as it was delivered. Only in the original packaging is safe transport guaranteed. When packing, proceed in reverse order as described in the setup and commissioning.

Clearaudio cannot accept liability for damage caused during transport due to incorrect packing.


10. CE Compliance

This product complies with the requirements of European directives and other regulations of the European Commission.



11. Disposal

For Customers in Europe: Disposal of electrical and electronic devices, as well as batteries and rechargeable batteries:

 a) If a product, its packaging, and/or accompanying documentation is marked with the symbol of a crossed-out wheellie bin, the product is subject to European directives and national laws implementing these directives.

b) These directives and laws stipulate that electrical and electronic devices, as well as batteries and rechargeable batteries, must not be disposed of with household waste (residual waste). You are required to dispose of old devices and discharged batteries/rechargeable batteries at designated collection points to ensure proper disposal, processing, and recycling.

c) Proper disposal of such devices, batteries, and rechargeable batteries helps conserve valuable resources and prevents potentially harmful effects on public health and the environment caused by improper waste disposal. Disposal is free of charge.

d) For more information on the collection and recycling of old devices, batteries, and rechargeable batteries, please contact your local authorities, your waste disposal company, or the retailer where you purchased the product.

Contents

1. Packing overview	5
2. Setup	5 - 6
3. Back view of the <i>statement phono</i>	7
4. General information of the display modes	8 - 10
5. Troubleshooting	11
6. Technical specifications.....	12
Warranty information.....	14 - 15



1. Packing overview

The **Clearaudio** *statement phono* is delivered in special packaging to ensure its safe transport. Retain this original packaging for any future transportation. Please check the contents immediately after unpacking:

- **Clearaudio** *statement phono* preamplifier
- External power supply
- 1 Power cord
- 2 Connection cords
- User manual
- Warranty card
- **Clearaudio** quality control card

To achieve the full performance of the *statement phono* preamplifier, please read the instruction and user manual carefully.

The following pages will ensure the best performance and will help to avoid any misuse.

2. Set up

2.1. Placement of the *statement phono*

The *statement phono* should be placed close to the turntable in order to use as short as possible phono cables between the tonearm and the *statement phono*. The best connection between the cartridge and the *statement phono* will be achieved with a direct-wired tonearm.

The *statement phono* should be placed as far away as possible from motors, transformers, power amplifiers or any other source of hum-inducing magnetic fields.

2.2 Applying Power

The external power supply contains two separated power supplies, which provide four individual supplies to each channel. Before applying power, check the voltage indication on the external power supply is correct for the local AC power in your country. Connect both 15-pin D-Sub-connectors to the *statement phono* and lock with the integrated screws, then connect the AC power cord and turn on the AC power-switches on the power-supplies.

After 3-5 seconds the "Mute LED" turns off and the signal outputs are working.

Note:

Never disconnect the D-Sub connector from the *statement phono* if the power supply is still on. Before you disconnect the D-Sub connector from the power supply or from the *statement phono*, make sure, that the AC Power switch is in the OFF position! Only then you can disconnect the D-Sub connectors.

For optimal audio performance we recommend that the *statement phono* is left continuously switched on stand by made to minimize thermal cycling of the components.

2.3 Input and Output Connections

The quality of the interconnect cables are extremely important in realizing the full sonic potential of the **Clearaudio** *statement phono*. Ideally the interconnect needs to be symmetrically designed, not coaxial.

Inputs and outputs for left and right channels are marked accordingly on the rear panel.

If you are using the unbalanced RCA-Inputs, the 'Input Select Switch' must be in the "Unbalanced" position, if using the XLR connector the switch must be set to "Balanced" it valids by balance+.

By Statement are everything other.

To achieve the best high fidelity performance you also can connect the *statement phono* directly to your power amplifier. The automatic mute function will prevent any noise from reaching the loudspeakers if the statement phono is turned on or off while the power amplifiers are still turned on.

2.4. Minimizing Hum

Note: You should minimize hum before listening to an LP record!

Also we recommend the use of phono cables with symmetrical design such as **Clearaudio** "Quint" or "Sixstream".

To minimize hum and other undesirable noise, if possible you should use the balanced inputs and outputs.

Also always take care to ensure an effective 'Ground' connection to your turntable.

Please note:

Phonopreamplifier are devices with a high signal gain, because the voltage which is supplied by the cartridge of the turntable is very low (in the range of a few μV). For this reason high frequency interference signals are noticeable reinforced. A complete blocking of these interference signals in the device would degrade the audio performance.

A result could be that high frequency interference, for example from the 230 V net or 115 V AC will affect the sound quality.

The device should therefore not operate near to high frequency generating devices such as mobile phones or modems or electricity networks for data transport (PLC).

3. Rear view of statement phono



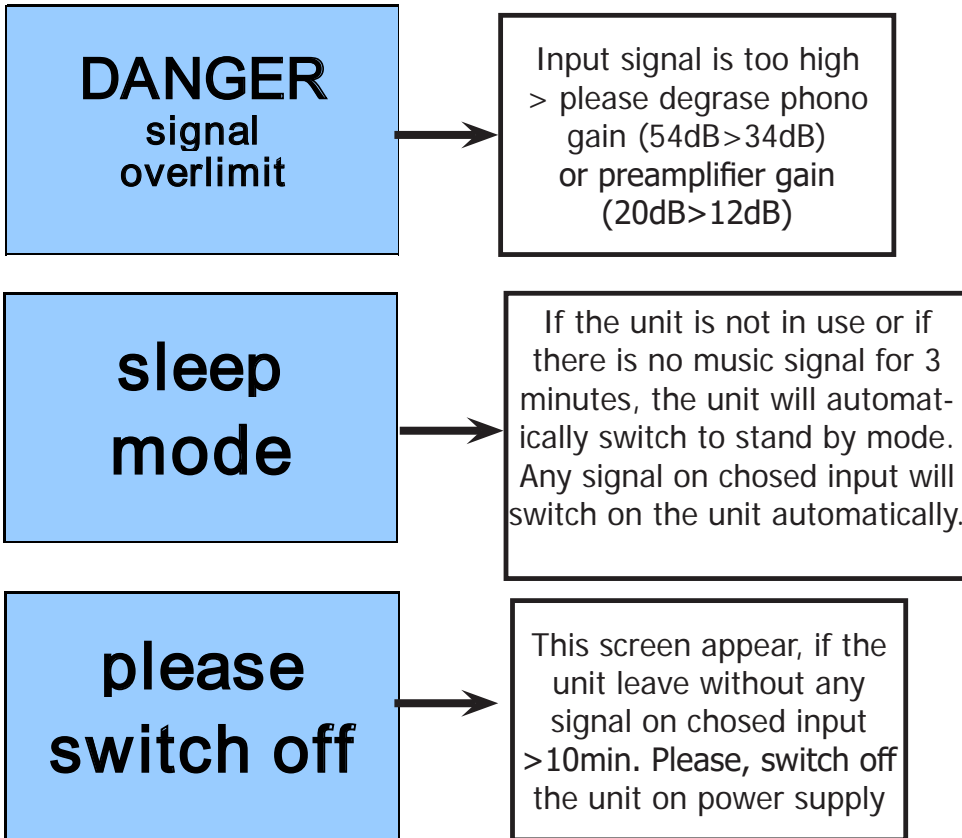
Pic. 1: Back view of the *statement phono*

<p>Pin connections: Inputs and Outputs XLR:</p>	<p>Pin 1 = GND (Shield) Pin 2 = Hot (+) Pin 3 = Cold (-)</p>
<p>Power Supply 15-pin. D-Sub Connector:</p>	<p>Pin 1, 9 = -18 V output class A buffer Pin 2 = GND remote control Pin 3, 5, 10, 13 = GND Pin 4, 11 = -18 V phono preamps Pin 6, 14 = +18 V phono preamps Pin 7 = +15V remote control Pin 8, 15 = +18 V output class A buffer Pin 12 = remote</p>

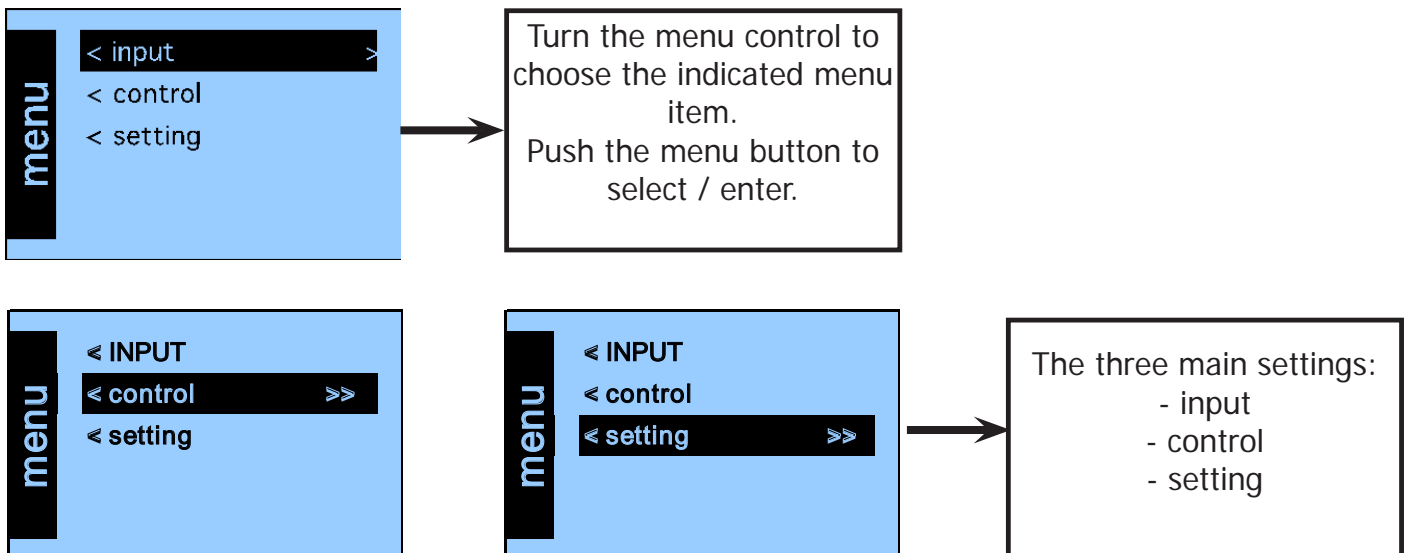
If you use a mobile phone near the *statement phono*, the audio performance can be influenced!

4. General information of display modes

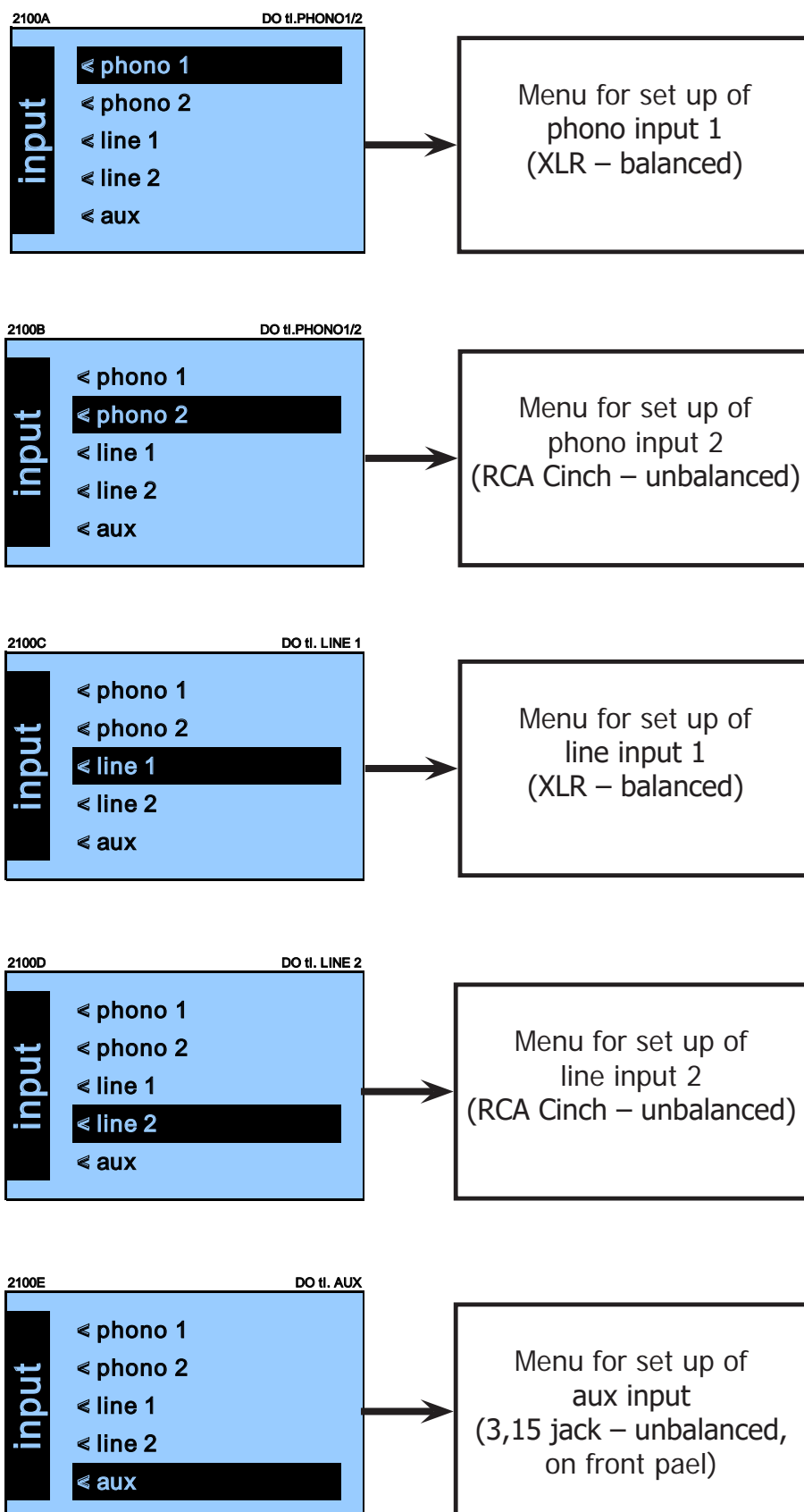
The letters in the display will be highlighted in each menu step or in any location you are.

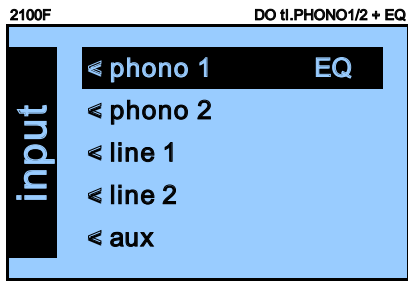


MENU:



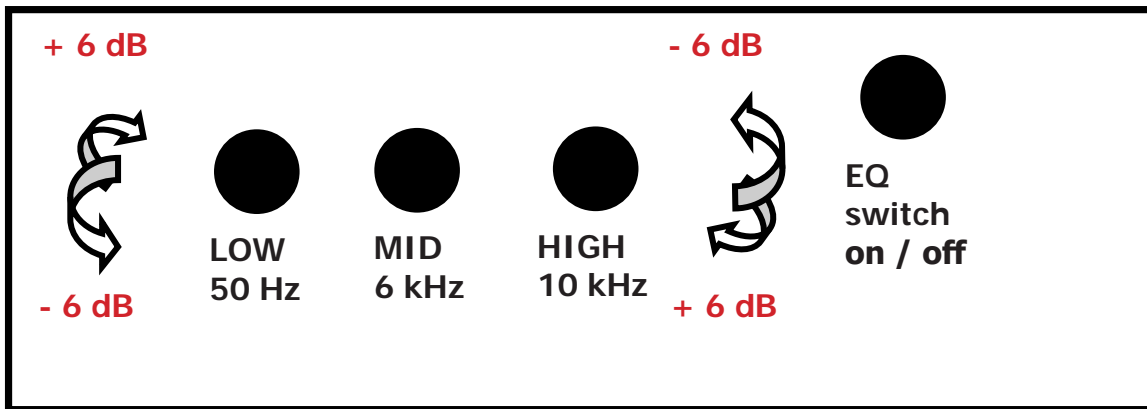
User manual



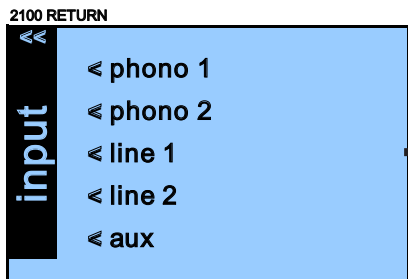


Display indicates that the "RIAA Equalization" is switched on. Only possible in phono 1/2 mode. For more information please see "RIAA Equalization".

RIAA Equalizer (EQ) on:

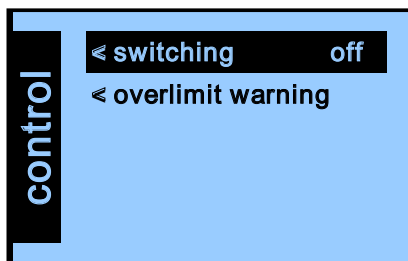


RIAA curve usage described in a follow up appendix!

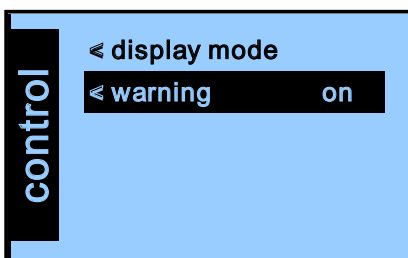


Return to "input main menu". Choose your input by turning the menu button and push to confirm

Control:



By pushing "switching on/off". - the background blue screen switched off in 3 sec after any change you make on menu per MENU knob or RC



By pushing "warning on/off" you can choose whether the overlimit warning will be indicated in the display or not. We recommend that this is left "on".



5. Troubleshooting

If you have a problem with your *statement phono*, first check the possible causes to rule out incorrect operation.

If the error persists, please contact your dealer!

Never try to open the device and/or repair it yourself, this will void the warranty!

Error	Cause	Measure
Device does not work	Is the power cord plugged in and the power switch turned on?	Check the connection.
No sound or low volume?	Did you choose the right input?	Check the connections of your hifi components.
	Have you selected the correct operating mode?	Check the settings on the underside of the phono stage.
	Is the device in „mute“ mode or is the volume set too low?	Check the volume setting of your device.
	The connection cables are not properly connected.	Check the tonearm and cartridge connections due the their respective user manual.
	Devices with a headphone output only: Are the headphones still plugged in when you are trying to play music through the speakers?	Disconnect the headphones.
Hum or noise	The ground cable is not connected or is faulty.	Connect the grounding cable from the turntable/tonearm to the respective grounding connection on the back of the device. If there are several ground connections, interrupt them one after the other and check the sound quality again.
	The device should not be operated in the vicinity of high-frequency devices such as mobile phones or modems or on power supply systems used for data traffic (PLC).	Make sure there is a minimum distance of 30cm between the power supply units of any type and the MC preamplifier or phono preamplifier. Powerlan adapters should not be operated on the same socket as the phono preamplifier.
One channel quieter or louder	The channels of an input are set differently.	Check the settings on the underside of the phono stage. These must be carried out identically for an input.
Remote control does not work	The sensor of the phono stage is covered.	Do not place any other objects in front of the phono stage, as these could interfere with reception.
	You are out of range of the receiver.	Get closer to the device.
	The battery of the remote control is exhausted.	Replace the battery as described in this user manual.

6. Technical specifications

Mode:	MM / MC switchable // Subsonic filter switchable
Amplification:	+ 34dB (MM mode) + 54dB (MC mode)
Input load:	47k Ω (MM mode) 25 Ω - 10k Ω (MC mode)
RIAA accuracy:	\pm 0.05dB / 20 - 100kHz
THD:	5mV / 1kHz / +50dB: < 0.0035% 0.5mV / 1kHz / +70dB: < 0.0015%
Signal to noise ratio:	5mV / 1kHz / +50dB: -82dB / -90dB (A-weighted) 0.5mV / 1kHz / +70dB: -72dB / -80dB (A-weighted)
Headroom:	+ 25dB
Max. output voltage:	> 12V
RIAA:	75 μ s / 318 μ s / 3180 μ s, 2 passive filter
Channel separation:	> 80dB (at 1kHz)
Output impedance:	10 Ω
Inputs:	Phono 1: balanced XLR (rear) Phono 2: unbalance RCA (rear) Line 1: balanced XLR (rear) Line 2: unbalanced RCA (rear) AUX: Jack 3.5mm (front)
Outputs:	unbalanced (RCA) balanced (XLR) headphone output (Jack: 6.3mm)
Power consumption:	Max. consumption: 200 watts In operation: 50 - 100 watts Standby mode: < 0.5 watts Off mode: 0.0 watts
Power supply:	Fully symmetrical line and Accu - power supply
Main power / channel:	2 x 2 x 22V / 1A
Battery power / channel:	2 x 18V / 3.2Ah
Total weight preamplifier:	Approx. 12kg
Total weight power supply:	Approx. 22kg
Dimensions preamplifier (W/D/H):	Approx. 435 x 350 x 100mm
Dimensions preamplifier (W/D/H):	Approx. 17.13 x 13.78 x 3.94 inches
Dimensions power supply (W/D/H):	Approx. 435 x 350 x 100mm
Dimensions power supply (W/D/H):	Approx. 17.13 x 13.78 x 3.94 inches
Manufacturer's warranty:	5 years*

* Provided that the warranty card is correctly completed and returned to **Clearaudio**, or your product is registered online at <https://clearaudio.de/en/service/registration.php>, within 14 days of purchase.



The full, extended warranty period for the *statement phono* is 5 years. To receive this full **Clearaudio** warranty, you must either complete and return the relevant section of the warranty registration card to **Clearaudio**, or register your product online at <https://clearaudio.de/en/service/registration.php>, within 14 days of purchase. Otherwise only the legal warranty can be considered.

The full 5 year warranty can only be honoured if the product is returned in its original packing.

ENGLISH WARRANTY

For warranty information, contact your local **Clearaudio** distributor.

RETAIN YOUR PURCHASE RECEIPT

Your purchase receipt is your permanent record of a valuable purchase. It should be kept in a safe place to be referred to as necessary for insurance purposes or when corresponding with **Clearaudio**.

IMPORTANT

When seeking warranty service, it is the responsibility of the consumer to establish proof and date of purchase.

Your purchase receipt or invoice is adequate for such proof.

FOR U.K. ONLY

This undertaking is in addition to a consumer's statutory rights and does not affect those rights in any way.

FRANÇAIS GARANTIE

Pour des informations sur la garantie, contacter le distributeur local **Clearaudio**.

CONSERVER L'ATTESTATION D'ACHAT

L'attestation d'achat est la preuve permanente d'un achat de valeur. La conserver en lieu sûr pour s'y reporter aux fins d'obtention d'une couverture d'assurance ou dans le cadre de correspondances avec **Clearaudio**.

IMPORTANT

Pour l'obtention d'un service couvert par la garantie, il incombe au client d'établir la preuve de l'achat et d'en corroborer la date. Le reçu ou la facture constituent des preuves suffisantes.

DEUTSCH GARANTIE

Bei Garantiefragen wenden Sie sich bitte zunächst an Ihren **Clearaudio** Händler. Heben Sie Ihren Kaufbeleg gut auf.

WICHTIG!

Die Angaben auf Ihrer Quittung erlauben uns die Identifizierung Ihres Gerätes und belegen mit dem Kaufdatum die Dauer Ihrer Garantie-Ansprüche. Für Serviceleistungen benötigen wir stets die Gerätenummer. Diese finden Sie auf dem Typenschild auf der Rückseite des Gerätes oder auch in der beigefügten Garantie-Registrierkarte.

NEDERLANDS GARANTIE

Voor inlichtingen omtrent garantie dient u zich tot uw plaatselijke **Clearaudio**.

UW KWITANTIE, KASSABON E.D. BEWAREN

Uw kwitantie, kassabon e.d. vormen uw bewijs van aankoop van een waardevol artikel en dienen op een veilige plaats bewaard te worden voor evt, verwijzing bijv, in verbind met verzekering of bij correspondentie met **Clearaudio**.

BELANGRIJK

Bij een evt, beroep op de garantie is het de verantwoordelijkheid van de consument een gedateerd bewijs van aankoop te tonen. Uw kassabon of factuur zijn voldoende bewijs.

 **ITALIANO**
GARANZIA

L'apparecchio è coperto da una garanzia di buon funzionamento della durata di un anno, o del periodo previsto dalla legge, a partire dalla data di acquisto comprovata da un documento attestante il nominativo del Rivenditore e la data di vendita. La garanzia sarà prestata con la sostituzione o la riparazione gratuita delle parti difettose. Non sono coperti da garanzia difetti derivanti da uso improprio, errata installazione, manutenzione effettuata da personale non autorizzato o, comunque, da circostanze che non possano riferirsi a difetti di funzionamento dell'apparecchio. Sono inoltre esclusi dalla garanzia gli interventi inerenti l'installazione e l'allacciamento agli impianti di alimentazione.

Gli apparecchi verranno riparati presso i nostri Centri di Assistenza Autorizzati. Le spese ed i rischi di trasporto sono a carico del cliente. La casa costruttrice declina ogni responsabilità per danni diretti o indiretti provocati dalla inosservanza delle prescrizioni di installazione, uso e manutenzione dettagliate nel presente manuale o per guasti dovuti ad uso continuato a fini professionali.

 **ESPAÑOL**
GARANTIA

Para obtener información acerca de la garantía póngase en contacto con su distribuidor **Clearaudio**.

GUARDE SU RECIBO DE COMPRA

Su recibo de compra es su prueba permanente de haber adquirido un aparato de valor, Este recibo deberá guardarlo en un lugar seguro y utilizarlo como referencia cuando tenga que hacer uso del seguro o se ponga en contacto con **Clearaudio**.

IMPORTANTE

Cuando solicite el servicio otorgado por la garantía el usuario tiene la responsabilidad de demostrar cuándo efectuó la compra. En este caso, su recibo de compra será la prueba apropiada.



Loving music

clearaudio electronic GmbH

Spardorfer Straße 150
91054 Erlangen
Germany

Phone /Tel.: +49 9131 40300 100

Fax: +49 9131 40300 119

www.clearaudio.de

www.analogshop.de

info@clearaudio.de



Handmade in Germany

Clearaudio Electronic accepts no liability for any misprints.

Technical specifications are subject to change or improvement without prior notice.

Product availability is as long as stock lasts.

Copies and reprints of this document, including extracts, require written consent from **Clearaudio Electronic GmbH, Germany**.

2025